



BAY VIEW APARTMENTS  
FFLATIAU GOLYGFA'R BAE

ANGLESEY

53.3°N | -4.2°W



# Developing a different view on quality living



## CONTENTS

53.3°N | -4.2°W



Bay View Apartments	1
Welcome	4
Living on the Bay	8
On the Beach	14
The Development	18
Features	22
Site Plan	23
Specification	25
Apartment Floor Plans	27
Disclaimer	40
Contact	41





**WELCOME**  
**ANGLESEY**

53.3° N | - 4.2° W

A bespoke collection of 18 brand new luxury apartments with stunning coastline views next to the beautiful award winning 'blue flag' sandy beach of Benllech Bay. This is a rare opportunity to reside in a contemporary apartment set within private gated, landscaped grounds designed to reflect the relaxed atmosphere of this seaside location.





LIVING ON THE BAY  
ANGLESEY

53.3° N | - 4.2° W



Benllech Bay sits on the Anglesey Coastal Path, a path running around the island's coastline linking the areas of Outstanding Natural Beauty. Benllech Bay is also adjacent to the historic and picturesque village of Red Wharf Bay, an immense sandy bay supporting wildlife, particularly waterfowl and wading birds.

There is the impressive Castell Mawr Rock, expansive views across the sands towards Llanddona and some of the area's most desirable restaurants including the 'Historic' Ship Inn, The Boat House and The Tavern on the Bay, where delicious speciality sea food and steak dishes are popular fayre.

For local supplies, Benllech Village is within walking distance, catering for all essential needs with local independent shops including; a family butchers, delicatessen, fish & seafood shop. There are three convenience stores, a chemist, hairdressers and a pet shop. There are also a number of cafes, public houses and restaurants.









**ON THE BEACH**  
ANGLESEY

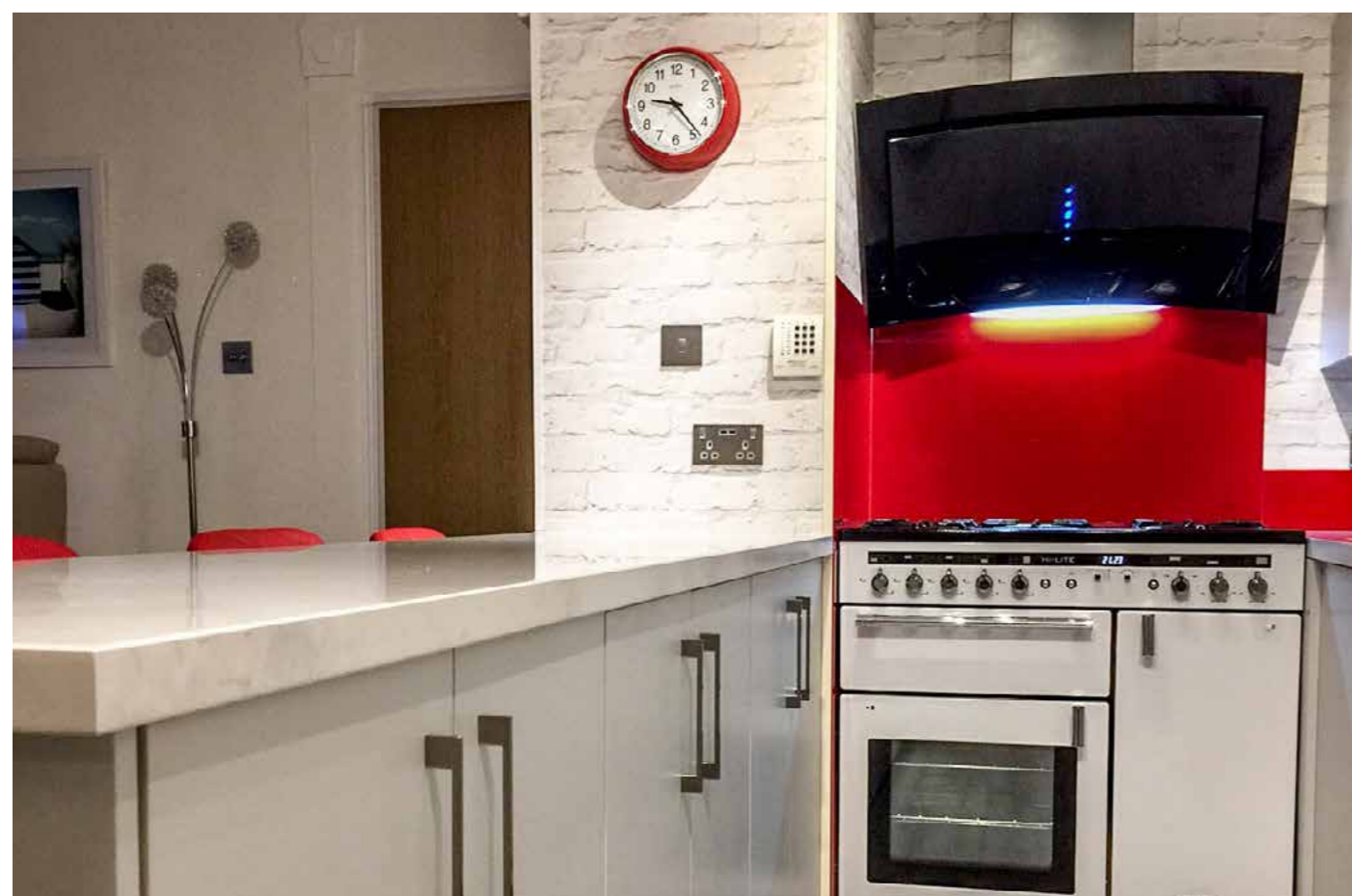
53.3° N | - 4.2° W



Bay View Apartments look out towards the sea and the coastal headland. With its vast golden sands the beach is one of the most treasured on Anglesey.

From warm morning walks to beach picnics and barbeques during the Summer afternoons and evenings. From moonlight star gazing to brisk wintery day hikes, the beach is your own year-round coastal garden.





## THE DEVELOPMENT

ANGLESEY

53.3° N | - 4.2° W

From the first point of entry, BAY VIEW APARTMENTS makes the statement of “pure exclusivity”. You will enter the development through an access controlled gateway, flanked by lovely high stone walling to ensure resident privacy. A private driveway leads down through landscaped areas to the rear car parking area and private gardens beyond. The building façade and elevations will be finished in a white render complimented by grey brick detailing. To complete the contemporary look, all soffits, fascia, rainwater gutters and window frames will benefit from a complementary grey finish.

Two main entrances will be accessed at the rear of the building from the security monitored car park, with each entrance providing access to nine apartments a piece via a modern ‘nautical’ themed staircase and a passenger lift. The communal areas ensure a pleasurable approach to each home with crisp decoration, recessed lighting, tiled and carpeted flooring.

High-end specification and quality fixtures and fittings continue throughout the apartments, complementing the contemporary, well-designed interior space. Apartments will benefit from white painted bright rooms, enhanced by glazed doors with glass Juliette balconies and/or walk-in bay windows. Details such as; under floor heating; LED flush ceiling light fittings; stainless door furniture; stainless steel lighting switches and power sockets and video access control system provide fabulous finishing touches.

Contemporary high-gloss or matt Kitchens will be custom designed, manufactured and installed by IMAGES of Chester, complemented by under unit lighting and glass splash backs. Purchaser will have the opportunity to add personal accessories and options through IMAGES of Chester, subject to the time of reservation and additional cost. NEFF appliances compliment the kitchens with oven, hob, extraction unit and microwave alongside an integrated dishwasher and fridge/freezer.

The bathrooms are equally special, fitted with stylish white coloured ROCA bathroom suites with contrasting Spanish imported wall tiles to provide an amazing ‘chic’ finish to all bathrooms and en-suite shower rooms.





## FEATURES

53.3° N | - 4.2° W

- Location! Location! Location!
- Exclusive Development of Luxury Apartments
- Contemporary Designed Interiors
- High Specification with Quality Fixtures & Fittings
- Under Floor Heating
- Bespoke designed & manufactured Kitchens by “IMAGES” of Chester
- “NEFF” Appliances – oven/hob; integrated dishwasher & fridge/freezer
- Stylish “ROCA” Bathroom Suites with Spanish Tiling
- Lifts & Staircase to All Floors
- Gated Entry with Video Access Control
- Stunning Coastline Views
- Many Rooms with Juliette Balconies or Bay Windows
- Garden Apartments available
- Residents Communal Garden with a natural stream
- Benllech Bay – with an award winning ‘Blue Flag’ beach
- Walking distance to Benllech Village
- Private Car Park with Allocated Visitor Spaces



**Image Disclaimer**  
The CGI Images are for illustrative purposes only. Decorative finished, fixtures, fittings and furnishings shown do not represent the current state of the property and are for display purposes. Furniture is not included in the sale. The illustrations are not to scale.



## SPECIFICATION

53.3° N | - 4.2° W

### EXTERNAL

- Double glazed opening windows and doors with 'contemporary grey' external finish and 'fresh white' internal finish
- Glazed double opening doors with glass Juliette balconies to all Lounges and bedrooms (except apartments: 1, 4, 10 & 12A)
- Walk-in bay windows to Lounges and Master Bedroom – apartments 1, 4, 10 & 12A

### COMMUNAL GROUNDS

- Video entry, access control vehicle and pedestrian gates
- Communal gardens to the rear of the development separated by a small stream with footbridge over
- Allocated car parking space for each apartment
- Communal bin storage and refuse area

### COMMUNAL INTERNAL AREA

- Video entry access control system for the main entrance door to each apartment
- 6 person passenger lifts to all floors (one in each block)
- Staircase to all floors
- Lower ground floor secure post room, plant & communications room and cleaners store

### DECORATION

- Communal area painted in white
- Apartments to be finished with white walls and woodwork
- Brushed chrome ironmongery

### FLOORING

- Tiling to the principle ground floor communal areas
- Carpeting to communal stairways and landings
- Tiled flooring to bathrooms

### KITCHENS

- Contemporary high-gloss or matt kitchen units – custom designed, manufactured and installed by IMAGES of Chester
- Glass splash backs
- Under unit lighting
- Built-in NEFF oven, hob, microwave and extractor hood unit
- Integrated NEFF appliances to include; Fridge / Freezer – (full size freezer)
- Compact dishwasher

### BATHROOM

- Chic and stylish ROCA Bathroom suites
- Spanish imported tiles
- Full height wall tiling around bath
- Shower fittings over bath with screen or shower cubical with screen
- Chrome heated towel rail

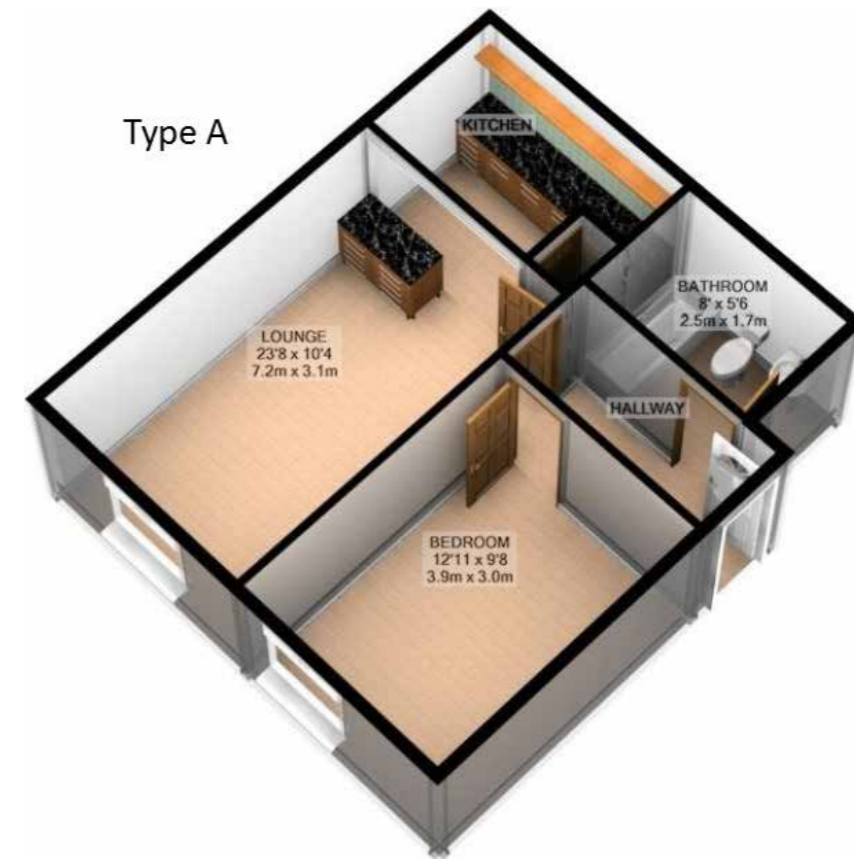
### ELECTRICAL

- Electrical Under Floor Heating
- Mechanical air circulation system
- LED flush ceiling down lighters
- TV points in living rooms and bedrooms

APARTMENT FLOOR PLANS  
1 BEDROOM APARTMENT - TYPE A

Plots: 2, 5, 8, 11, 14 & 17 – Ground Floor, First Floor & Second Floor

Hallway:	9'8" x 4'5"	(2.95 x 1.36)
Lounge / Kitchen:	23'8" x 10'3"	(7.22 x 3.13)
Bedroom:	13'0" x 9'8"	(3.94 x 2.95)
Bathroom / WC:	8'.0" x 5'6"	(2.45 x 1.68)
Est. Internal Area:	446 sq.ft.	(41.4 sq.m)



Floor Plan Disclaimer

The floor plans are for illustrative purposes only. Decorative finished, fixtures, fittings and furnishings shown do not represent the current state of the property. Furniture is not included in the sale. Measurements are approximate. The illustrations are not to scale.

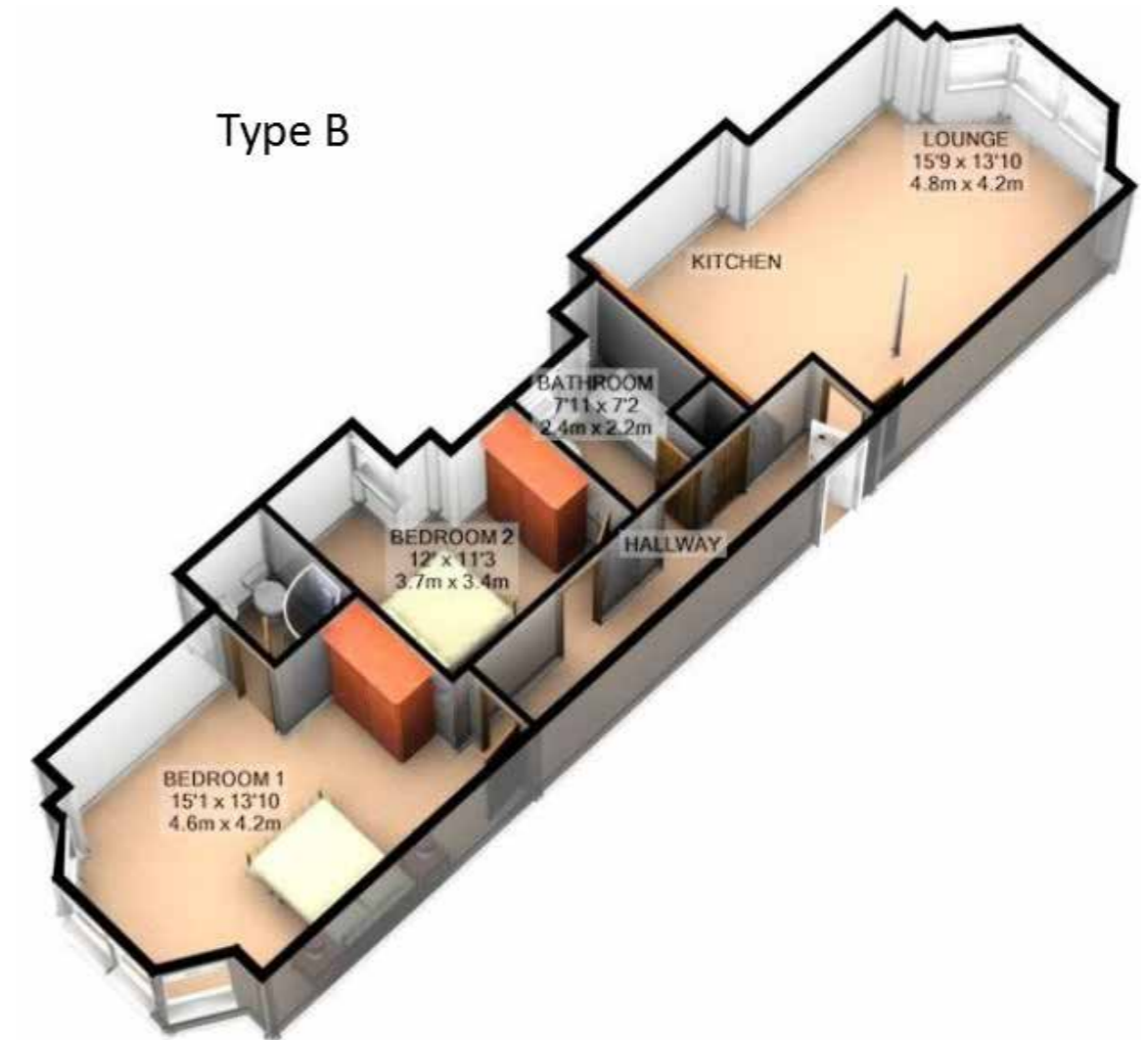


APARTMENT FLOOR PLANS  
2 BEDROOM APARTMENT - TYPE B

Plots: 1\*, 4, 10\* & 12a – Ground Floor & First Floor

Hallway:	20'8" x 4'1"	(6.32 x 1.26)
Lounge / Kitchen:	15'8" x 13'10"	(4.79 x 4.22) Plus bay window & Kitchen recess
Bedroom 1:	15'0" x 13'10"	(4.59 x 4.22) Plus bay window
En-suite:	6'1" x 4'10"	(1.87 x 1.49)
Bedroom 2:	12'0" x 11'3"	(3.66 x 3.43) Maximum points
Bathroom / WC:	7'11" x 7'1"	(2.42 x 2.18)
Est. Internal Area:	813 sq.ft.	(75.5 sq.m)

\*NB: Ground Floor Plots 1 & 10 have private garden areas



Floor Plan Disclaimer

The floor plans are for illustrative purposes only. Decorative finished, fixtures, fittings and furnishings shown do not represent the current state of the property. Furniture is not included in the sale. Measurements are approximate. The illustrations are not to scale.

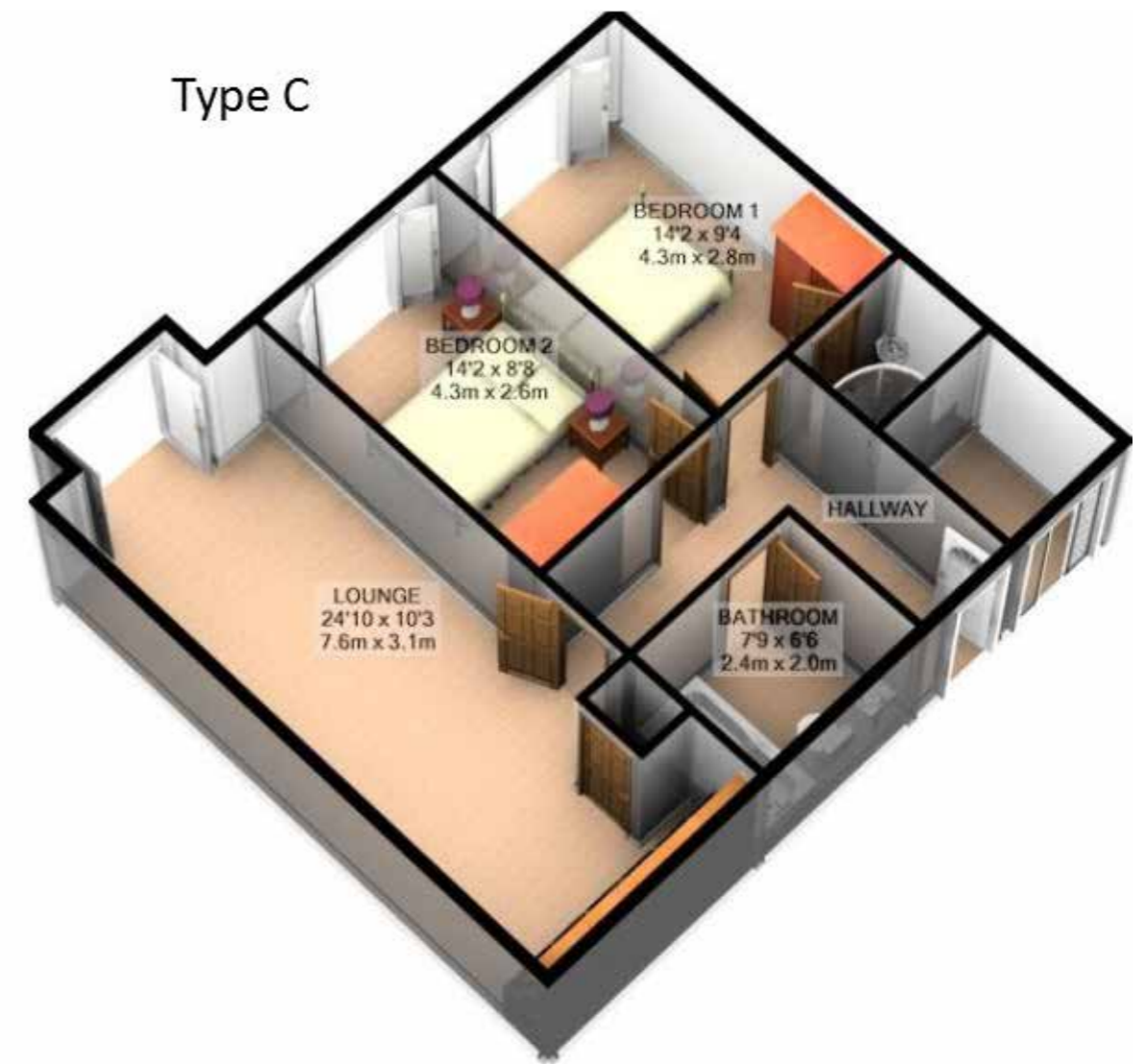
APARTMENT FLOOR PLANS  
2 BEDROOM APARTMENT - TYPE C

Plots: 3\*, 6, 9, 12\*, 15 & 18 – Ground Floor, First Floor  
& Second Floor

'L' Shaped Hallway:	12'4" x 10'5"	(3.77 x 3.18)
Lounge / Kitchen:	24'10" x 10'3"	(7.57 x 3.14) Plus window recess
Bedroom 1:	14'3" x 10'2"	(4.32 x 2.84)
En-suite:	5'9" x 5'1"	(1.77 x 1.51)
Bedroom 2:	14'3" x 8'7"	(4.32 x 2.64)
Bathroom / WC:	7'8" x 6'5"	(2.36 x 1.98)
Est. Internal Area:	714 sq.ft.	(66.3 sq.m)

\*NB: Ground Floor Plots 3 & 12 have private garden areas

Type C



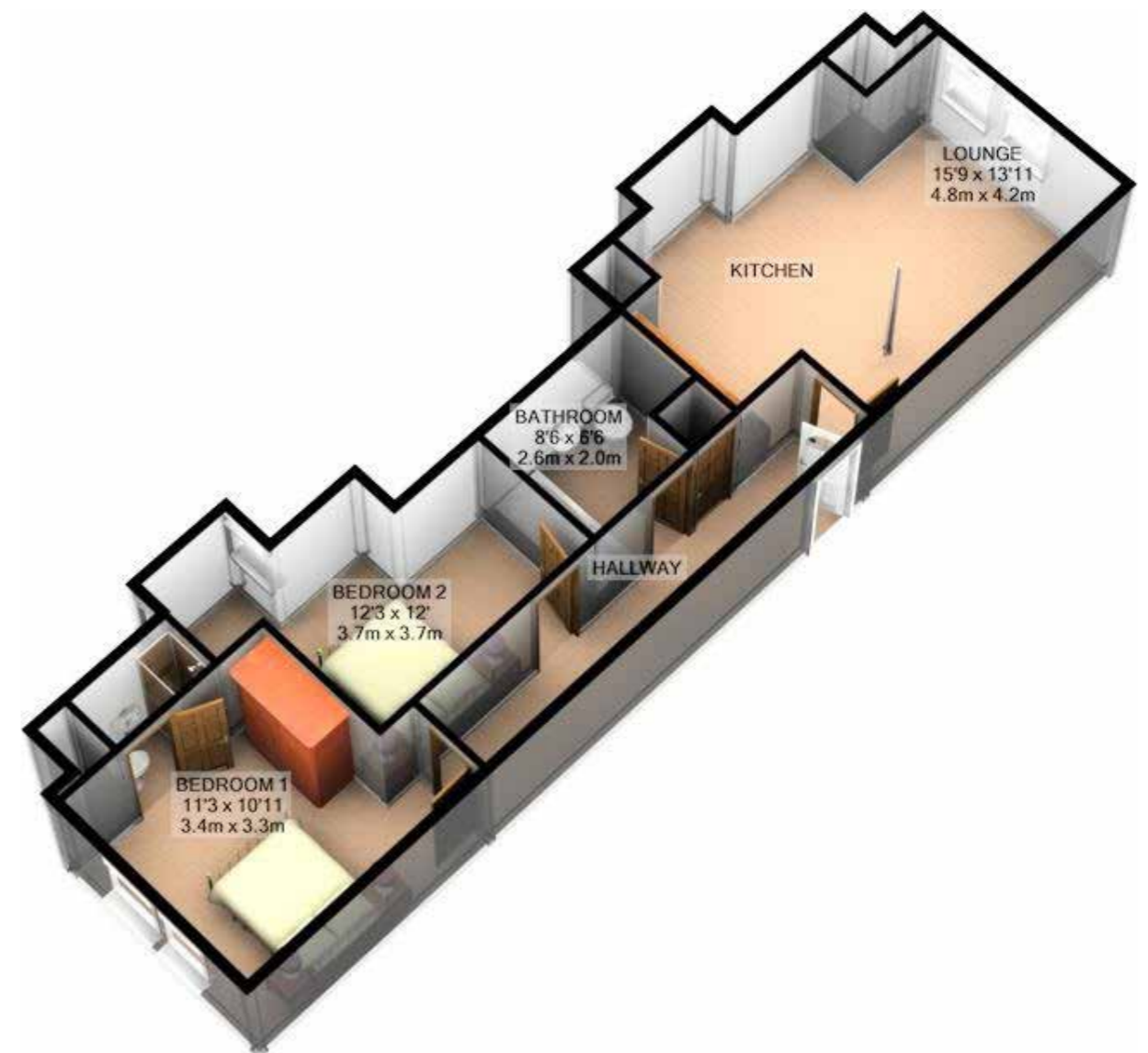
Floor Plan Disclaimer

The floor plans are for illustrative purposes only. Decorative finished, fixtures, fittings and furnishings shown do not represent the current state of the property. Furniture is not included in the sale. Measurements are approximate. The illustrations are not to scale.

APARTMENT FLOOR PLANS  
2 BEDROOM APARTMENT - TYPE D

Plots: 7 & 16 – Second Floor

Hallway:	22'10" x 4'1"	(6.96 x 1.26)
Lounge / Kitchen:	15'8" x 13'10"	(4.79 x 4.23) Plus bay window & Kitchen recess
Bedroom 1:	11'5" x 10'11"	(3.48 x 3.33) Plus bay window
En-suite:	5'5" x 2'9"	(1.67 x 0.85)
Bedroom 2:	12'3" x 12'0"	(3.74 x 3.66) Maximum points
Bathroom / WC:	8'5" x 6'6"	(2.58 x 1.99)
Est. Internal Area:	697 sq.ft.	(64.7 sq.m)



Floor Plan Disclaimer

The floor plans are for illustrative purposes only. Decorative finished, fixtures, fittings and furnishings shown do not represent the current state of the property. Furniture is not included in the sale. Measurements are approximate. The illustrations are not to scale.



BAY VIEW APARTMENTS  
FLOOR PLANS

53.3°N | -4.2°W

GROUND FLOOR



PLOTS: 1, 2 & 3

PLOTS: 10, 11 & 12

FIRST FLOOR



PLOTS: 4, 5 & 6

PLOTS: 12a, 14 & 15

SECOND FLOOR



PLOTS: 7, 8 & 9

PLOTS: 16, 17 & 18

Floor Plan Disclaimer

The floor plans are for illustrative purposes only. Decorative finished, fixtures, fittings and furnishings shown do not represent the current state of the property. Furniture is not included in the sale. Measurements are approximate. The illustrations are not to scale.





## DISCLAIMERS

**Sales Particulars:** This Sales Brochure has been prepared by the developer and its agent.

**Image Disclaimer:** The CGI Images are for illustrative purposes only. Decorative finished, fixtures, fittings and furnishings shown do not represent the current state of the property and are for display purposes. Furniture is not included in the sale. The illustrations are not to scale.

**Floor Plan Disclaimer:** The floor plans are for illustrative purposes only. Decorative finished, fixtures, fittings and furnishings shown do not represent the current state of the property. Furniture is not included in the sale. Measurements are approximate. The illustrations are not to scale.

**The Property Misdemeanors Act 1991:** The developer and its agent have not tested any apparatus, equipment, fixtures and fittings or services and so cannot verify that they are in working order or fit for the purpose. A Buyer is advised to obtain verification from their Solicitor or Surveyor. References to the Tenure of a property are based on information supplied by the Seller. Items shown in photographs are NOT included unless specifically mentioned within the sales particulars. They may however be available by separate negotiation. Buyers must check the availability of any property and make an appointment to view before embarking on any journey to see a property. Although these particulars are thought to be materially correct their accuracy cannot be guaranteed and they do not form part of any contract.

All measurements are approximate.

**Misrepresentation Act 1967:** The property details have been produced in good faith, are set out as a general guide and do not constitute the whole or part of any contract. All liability, in negligence or otherwise, arising from the use of the details is hereby excluded.



**BAY VIEW APARTMENTS**  
**FFLATIAU GOLYGFA'R BAE**

**ANGLESEY**

53.3°N | -4.2°W

**CONTACT US**

**TELEPHONE**

01248 852 839

**WEBSITE**

[www.bayviewanglesey.co.uk](http://www.bayviewanglesey.co.uk)

**FACEBOOK**

[Facebook@bayviewanglesey](https://www.facebook.com/bayviewanglesey)



Developer

**LINGAR**  
BUILD · DEVELOP · MANAGE

Master Sales Agent

**O'Connor  
Bowden**

Architect

**Cassidy+  
Ashton**

Warranty Provider

**premier  
guarantee**



Cefnogiwr gan  
Lywodraeth Cymru  
Supported by  
Welsh Government